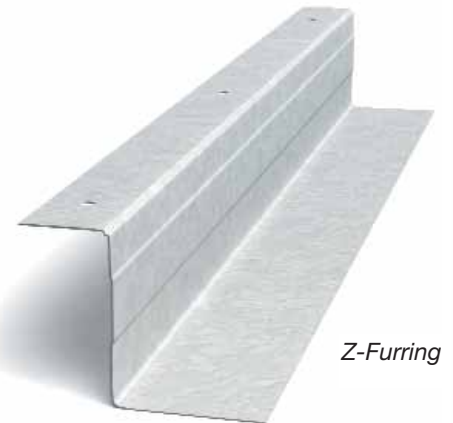




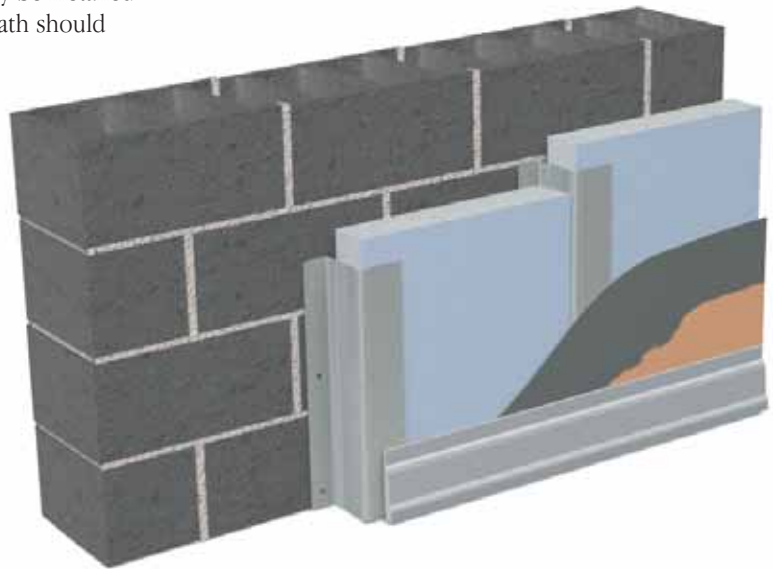
Easily accommodates rigid insulation and provides for the attachment of gypsum wallboard, veneer or plaster to the interior of masonry walls.

- 1-1/4" wide flange for easy screw attachment
- "Toed in" leg to grip rigid insulation positively
- Available in 1", 1-1/2", 2", 2-1/2" depths and 10' standard length
- Custom sizes and lengths available



Z-Furring

Dietrich Z-furring is used to furr out interior masonry or poured concrete wall substrates and to support rigid polystyrene, mineral, or fiberglass batt insulation while providing a uniform plane for gypsum panel attachment. Z-furring should be installed vertically with the 3/4" flange against the substrate. The type of fastener and spacing will vary based on application. Gypsum wallboard may be installed parallel or perpendicular to the Z-furring. Metal lath should be installed perpendicular to the Z-furring.



Z-Furring (ZF-Series™)

DMF Product Code	Thickness				Size		Length		Weight		Packaging	
	Gauge	Mils	Design Thickness		Inches	mm	ft	m	lbs/ft	kg/m	Pcs/Bundle	Pcs/Skid
			Inches	mm								
ZFN1	25	18	0.0188	0.478	1"	25.4	8'-6", 10', 12'	2.59, 3.05, 3.66	0.200	0.295	NA	500
ZFN2		18	0.0188	0.478	1-1/2"	38.1			0.240	0.357	NA	500
ZFN3		18	0.0188	0.478	2"	50.8			0.270	0.400	NA	500
ZFN4		18	0.0188	0.478	2-1/2"	63.5			0.300	0.446	NA	500
ZFE1	20	30	0.0312	0.792	1"	25.4			0.310	0.459	NA	500
ZFE2		30	0.0312	0.792	1-1/2"	38.1			0.360	0.535	NA	500
ZFE3		30	0.0312	0.792	2"	50.8			0.420	0.623	NA	500
ZFE4		30	0.0312	0.792	2-1/2"	63.5			0.480	0.712	NA	500

Heavier gauges available on request.