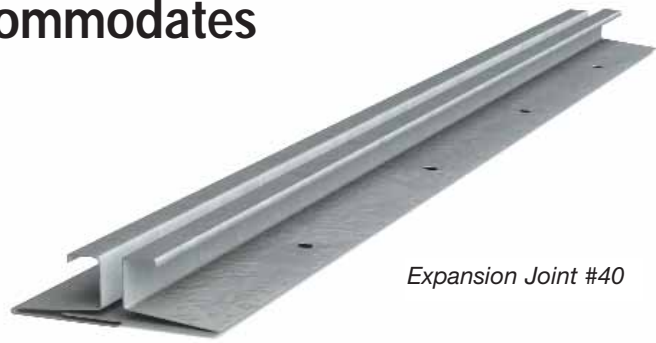




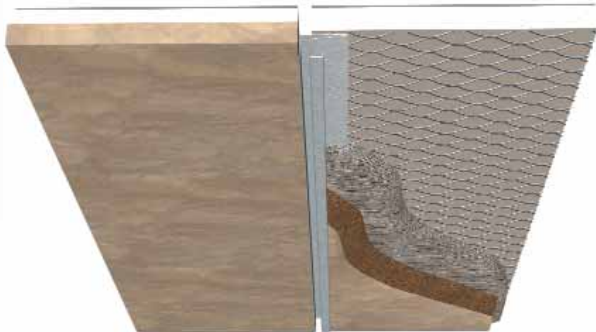
Two-piece slip joint that accommodates movement in two directions.

- Allows for wall movement in multiple directions.
- Adjusts from 1/4" to 5/8".
- Provides effective plaster bond.
- Available with numerous modifications.



Expansion Joint #40

Caution: Additional weather shields should be installed behind the joint to enhance the weather resistance of this system.



Dietrich Expansion Joint #40 is a two-piece, slip joint that finishes butt ends of adjacent panels in wide or tall walls and ceilings to allow for multi-directional movement. Panels are attached to parallel studs through the expansion joint flanges, enabling the finished surface to expand or contract naturally without cracking. These are ideal for joining dissimilar wall types such as wood framing to CMU and at construction joints.

#40 Expansion Joints should be used where excessive horizontal and vertical movement may occur. They give better results than J-Trim when used as a feature strip or as a wall-to-ceiling joint. Atrium walls, wide wall areas and structural column-through ceiling areas are some of their special applications. These offer broad functional and aesthetic opportunities. Adjustable expansion opening or reveal is 1/4" to 5/8". Ground heights are 1/2", 3/4" and 7/8".

CAUTION: Joints and corners are a potential point of water intrusion. Dietrich strongly recommends building paper be placed behind all joints and corners. Also, a bead of high-quality caulking should be applied under the joints prior to the attachment of the materials.

Expansion Joint #40—Galvanized (EJ40), Zinc (EZ40)

DMF Product Code	Size				Weight/Carton		Packaging	
	Grounds		Length		lbs	kg	Pcs/ Carton	Carton/ Skid
	Inches	mm	ft	m				
EJ40	1/2	12.7	10	3.05	41	18.3	15	42
	3/4	19.1	10	3.05	44	19.7	15	42
	7/8	22.2	10	3.05	45	20.4	15	42
EZ40*	1/2	12.7	10	3.05	50	22.4	15	42
	3/4	19.1	10	3.05	53	23.8	15	42
	7/8	22.2	10	3.05	56	25.1	15	42

*Zinc.

Expansion Joint #40—Galvanized (EJ40), Zinc (EZ40)