

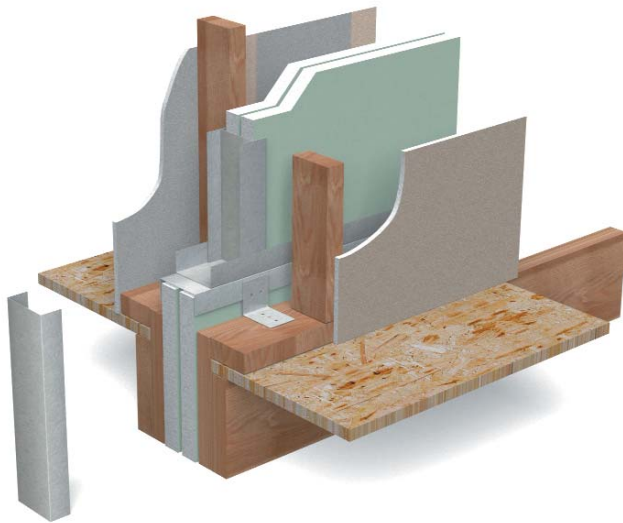


C-Runner or H-Track is used at the top and bottom of vertical panels to secure shaftliner panels and H-Studs in area separation wall assemblies.

- 2-hour fire-rated assembly.
- 2" wide and 25 gauge.
- Tested and approved with most major gypsum and shaftliner manufacturers.
- Standard 10' stock length.
- ICC approved—Evaluation Report 92-19.



H-Track/C-Runner



Dietrich C-Runner, also referred to as H-Track, is used to secure H-Stud and gypsum shaftliner panels in area separation wall assemblies. C-Runner is attached to the foundation with power-driven fasteners. C-Runner is also used as top track to cap the H-stud and gypsum shaftliner panels. A second track is then screwed back to back, to the lower runner, to hold the next level of the area separation wall assembly. Area Separation Wall assemblies are limited to 50' in height (maximum).



Although this was a tragic event, it clearly proves the effectiveness of the Area Separation Wall system. The system performed as designed by maintaining the integrity of the fire wall protecting the lives and property of the adjacent units.

Photo courtesy of National Gypsum

C-Runner (HRN)

DMF Product Code	Thickness				Size				Weight		Packaging	
	Gauge	Mils	Design Thickness		Width		Length		lbs/ft	kg/m	Pcs/Bundle	Pcs/Skid
			Inches	mm	Inches	mm	ft	m				
HRN1 (C-Runner)	25	18	0.0188	0.478	2-1/8	54.0	8	2.44	0.270	0.400	NA	560
			10	3.05			560					