

DIETRICH

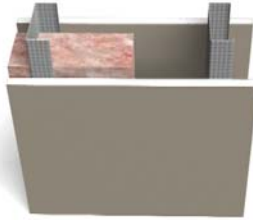
**UltraSTEEL**<sup>®</sup>  
FRAMING

## — Fire Assemblies Underwriters Laboratories V450 Options

Reference V450 listings for full assembly details.

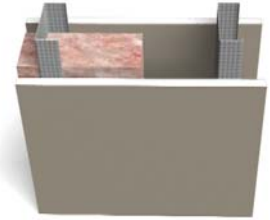
### 1 Hour Assembly

- 3-5/8" Minimum Studs
- 1 Layer 5/8" USG Type X Applied Vertically



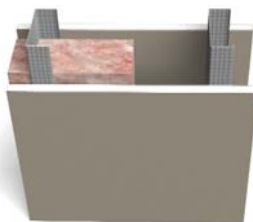
### 1 Hour Assembly

- 3-5/8" Minimum Studs
- 1 Layer 5/8" USG Type X Applied Horizontally



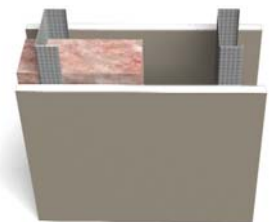
### 1 Hour Assembly

- 3-5/8" Minimum Studs
- 1 Layer 5/8" USG Type C Applied Vertically



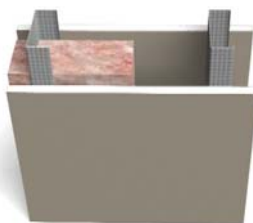
### 1 Hour Assembly

- 3-5/8" Minimum Studs
- 1 Layer 5/8" National Type X Applied Vertically



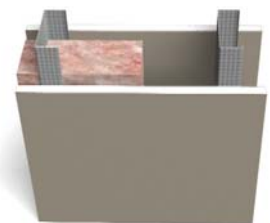
### 1 Hour Assembly

- 3-5/8" Minimum Studs
- 1 Layer 5/8" Lafarge Type X Applied Vertically



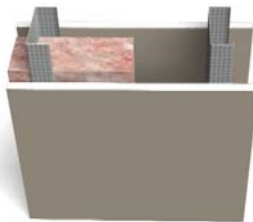
### 1 Hour Assembly

- 3-5/8" Minimum Studs
- 1 Layer 5/8" CertainTeed Type X Applied Vertically



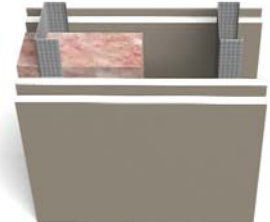
### 1 Hour Assembly

- 3-5/8" Minimum Studs
- 1 Layer 5/8" American Type X Applied Vertically



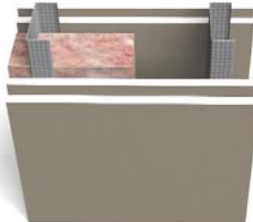
### 2 Hour Assembly

- 3-5/8" Minimum Studs
- 2 Layers 5/8" National Type X Applied Vertically



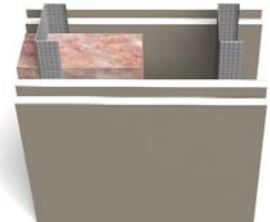
### 2 Hour Assembly

- 2-1/2" Minimum Studs
- 2 Layers 5/8" USG Type X Applied Horizontally



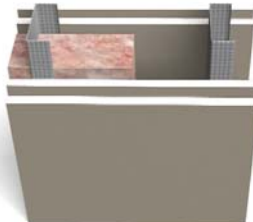
### 2 Hour Assembly

- 1-5/8" Minimum Studs
- 2 Layers 5/8" Lafarge Type X Applied Vertically



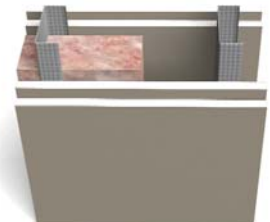
### 2 Hour Assembly

- 1-5/8" Minimum Studs
- 2 Layers 5/8" CertainTeed Type X Applied Vertically



### 2 Hour Assembly

- 1-5/8" Minimum Studs
- 2 Layers 5/8" American Type X Applied Vertically



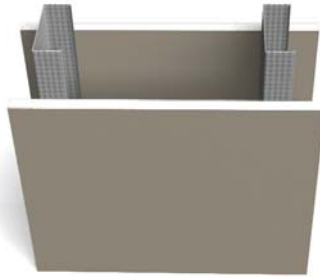
Notes: Deeper studs allowed in all assemblies. Batt and blanket insulation optional in all fire assemblies. Resilient channel optional in all fire assemblies

DIETRICH  
**UltraSTEEL®** — Sound Assemblies  
FRAMING

Certified by Riverbank Acoustical Laboratories.

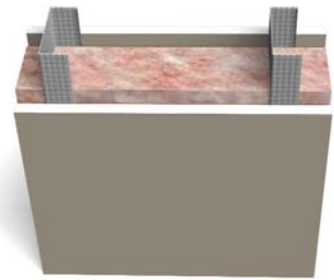
**STC 39 Assembly**

- 3-5/8" Minimum Studs
- 1 Layer 5/8" Gypsum Board



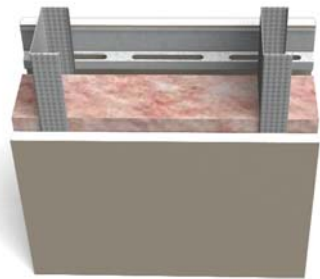
**STC 48 Assembly**

- 3-5/8" Minimum Studs
- 3-5/8" Fiberglass Insulation
- 1 Layer 5/8" Gypsum Board



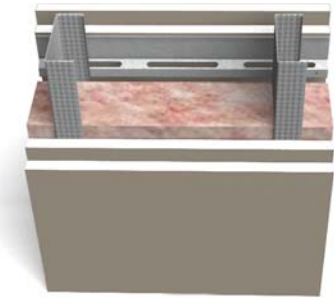
**STC 52 Assembly**

- 3-5/8" Minimum Studs
- 3-5/8" Fiberglass Insulation
- RC1 Channel 1 side
- 1 Layer 5/8" Gypsum Board



**STC 61 Assembly**

- 3-5/8" Minimum Studs
- 3-5/8" Fiberglass Insulation
- RC1 Channel 1 side
- Double Layer 5/8" Gypsum Board on Both Sides



UltraSTEEL® Fire and Sound Assemblies

DIETRICH  
**UltraSTEEL®** — Certification Available in all 50 States  
FRAMING

**Dietrich Design Group (North)**



1414 Field Street,  
Building C, Suite 1  
Hammond, IN 46320  
800-873-2443 or  
219-853-9474 phone  
219-932-4141 fax

**DIETRICH**  
DESIGN GROUP  
A Worthington Industries Company

**Dietrich Design Group (South)**



330 Greenwood Place  
McDonough, GA 30253  
800-873-2443 or  
678-304-5525 phone  
678-304-5556 fax

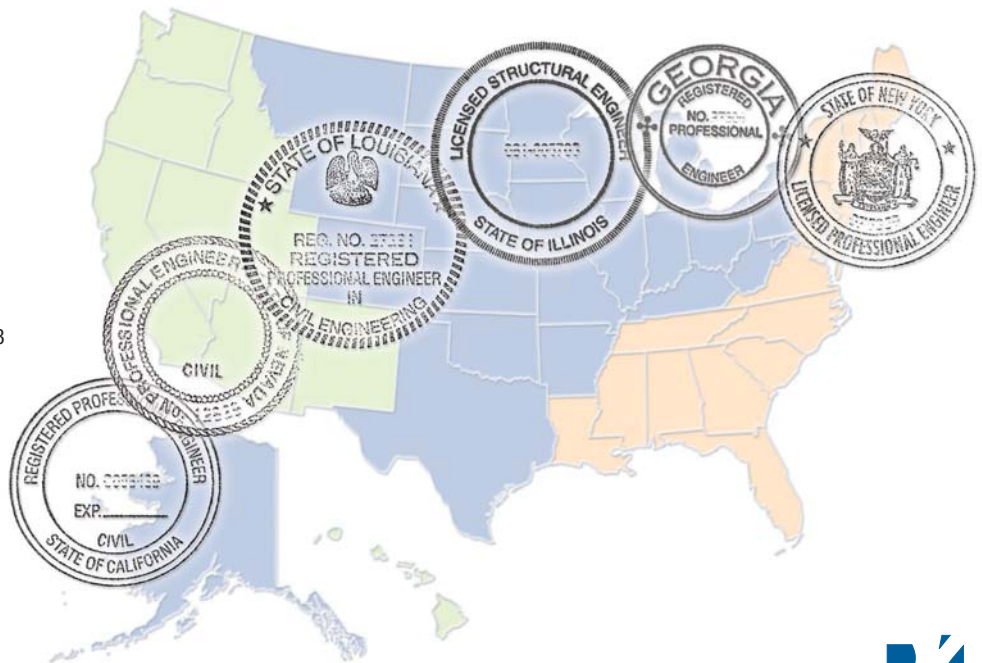
**DIETRICH**  
DESIGN GROUP  
A Worthington Industries Company

**Dietrich Design Group (West)**



2262 Rutherford Road  
Suite 104  
Carlsbad, CA 92008  
800-873-2443 or  
760-931-0465 phone  
760-931-9824 fax

**DIETRICH**  
DESIGN GROUP  
A Worthington Industries Company



For more information or to contact a sales representative, see page 3.